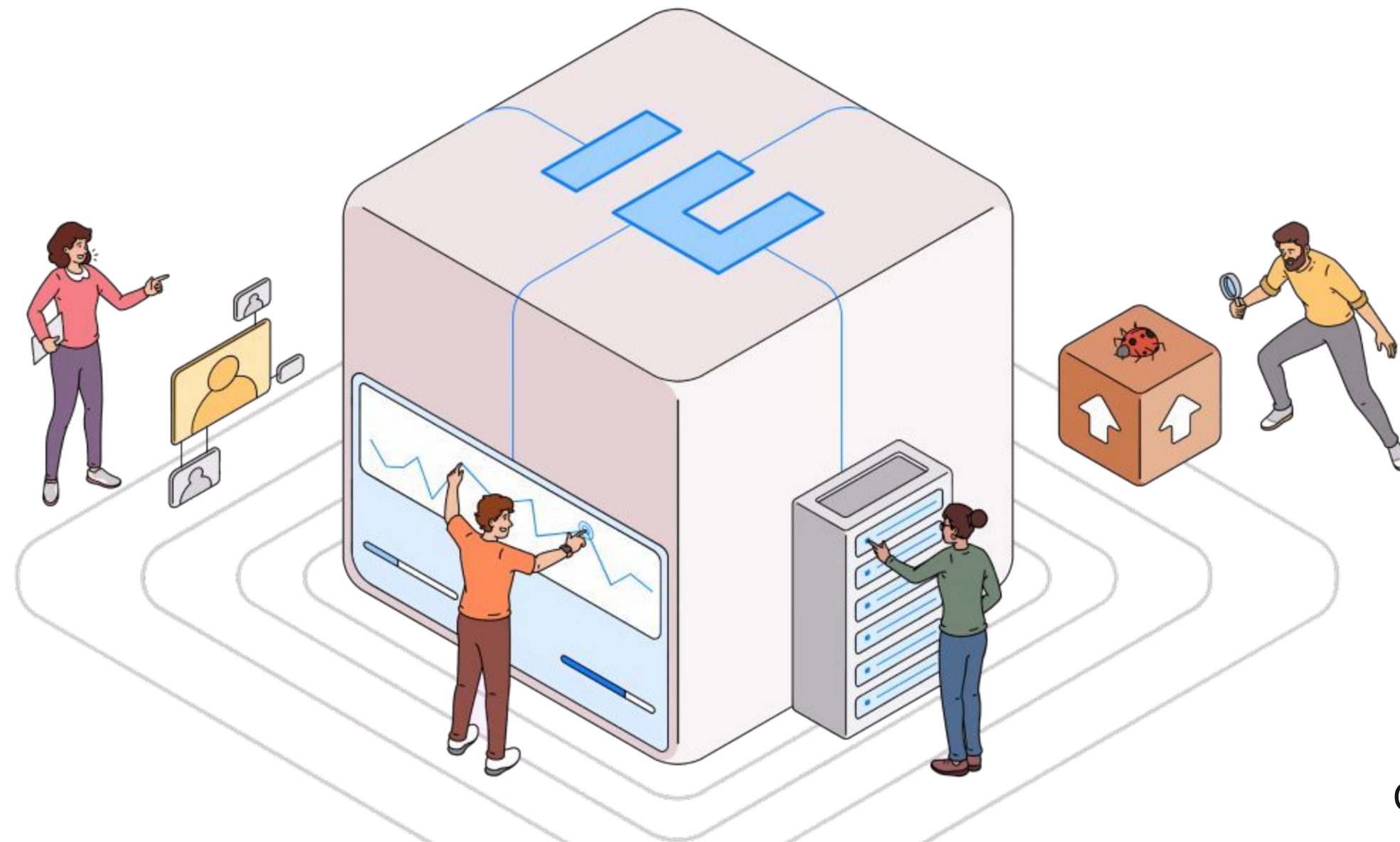




# ERPNext

Save upto 40% on ERP, CRM, HRM  
Get your business Online with Unlimited Users

**Introducing New Enterprise Software for Small, Medium Businesses**



Website: [www.fileian.com](http://www.fileian.com)  
Email: [team@fileian.com](mailto:team@fileian.com)  
Call: 9175 975 009 / 909 630 22 11



# ERPNext

Building awesome enterprise applications

## What is ERPNext?

ERPNext is an open source web-based system aimed at small and medium sized businesses.

It assists companies with accounting, human resource management, sales, purchase, inventory, CRM, administration, project and task management, manufacturing, and even website. ERPNext is built using Python, Frappe, and MySQL.



Website: [www.fileian.com](http://www.fileian.com)  
Email: [team@fileian.com](mailto:team@fileian.com)  
Call: 9175 975 009 / 909 630 22 11

# ERPNext

Building awesome enterprise applications

**15+**

years in  
business

**5000+**

customers  
across domains

**60+**

team, built for  
success



CERTIFIED  
**Partner**

Website: [www.fileian.com](http://www.fileian.com)  
Email: [team@fileian.com](mailto:team@fileian.com)  
Call: 9175 975 009 / 909 630 22 11

# ERPNext

Building awesome enterprise applications

 ZERODHA



iftas.

SWASTIK  
ENGINEERING EMERGENCE

5000+

customers across  
domains



Website: [www.fileian.com](http://www.fileian.com)  
Email: [team@fileian.com](mailto:team@fileian.com)  
Call: 9175 975 009 / 909 630 22 11

# ERPNext

Building awesome enterprise applications

**5K+**

global users

**\$1B+**

transactions

**12K+**

community

**10K+**

hrs of implementation

**150+**

countries

**7K+**

installations



Website: [www.fileian.com](http://www.fileian.com)  
Email: [team@fileian.com](mailto:team@fileian.com)  
Call: 9175 975 009 / 909 630 22 11

# About ERPNext

- ✓ World's top 100% open-source ERP
- ✓ High feature coverage
- ✓ Serves multiple domains and industries
- ✓ 12,000+ community members
- ✓ Modern and scalable web platform
- ✓ Powered by Frappe Framework

## Domains

Manufacturing

Retail

Services

HealthCare

Fintech (BFSI)

Distribution



CERTIFIED  
**Partner**

Website: [www.fileian.com](http://www.fileian.com)  
Email: [team@fileian.com](mailto:team@fileian.com)  
Call: 9175 975 009 / 909 630 22 11



# Features & Modules



**Purchase  
Management**



**Inventory  
Management**



**Human  
Resources**



**CRM**



**Manufacturing &  
Sales Management**



**Accounting**



**Support**



**Community  
Apps**

# Why ERPNext



## Open Source

- ✓ Single source of truth
- ✓ Cross-platform compatibility



## Easier to use and configure



## Personalizable and flexible

- ✓ Helps in planning and managing
- ✓ Eliminates redundancy



## Powered by Frappe Framework



Website: [www.fileian.com](http://www.fileian.com)  
Email: [team@fileian.com](mailto:team@fileian.com)  
Call: 9175 975 009 / 909 630 22 11



# Testimonials



ERPNext has been very integral  
in our journey

**Kailash  
Nadh**  
CTO, Zerodha



We're confident that ERPNext  
will be the future

**Deepafi Ingle**  
Reliance Industries

It's the most agile ERP on  
the planet



**Simone Micheli**  
Project Manager, Wallbox

The magic that has been built and  
continue to be built is futuristic..

**Salim**  
Business Consultant



CERTIFIED  
**Partner**

Website: [www.fileian.com](http://www.fileian.com)  
Email: [team@fileian.com](mailto:team@fileian.com)  
Call: 9175 975 009 / 909 630 22 11

# ERPNext

Building awesome enterprise applications

## Modules & Screenshots

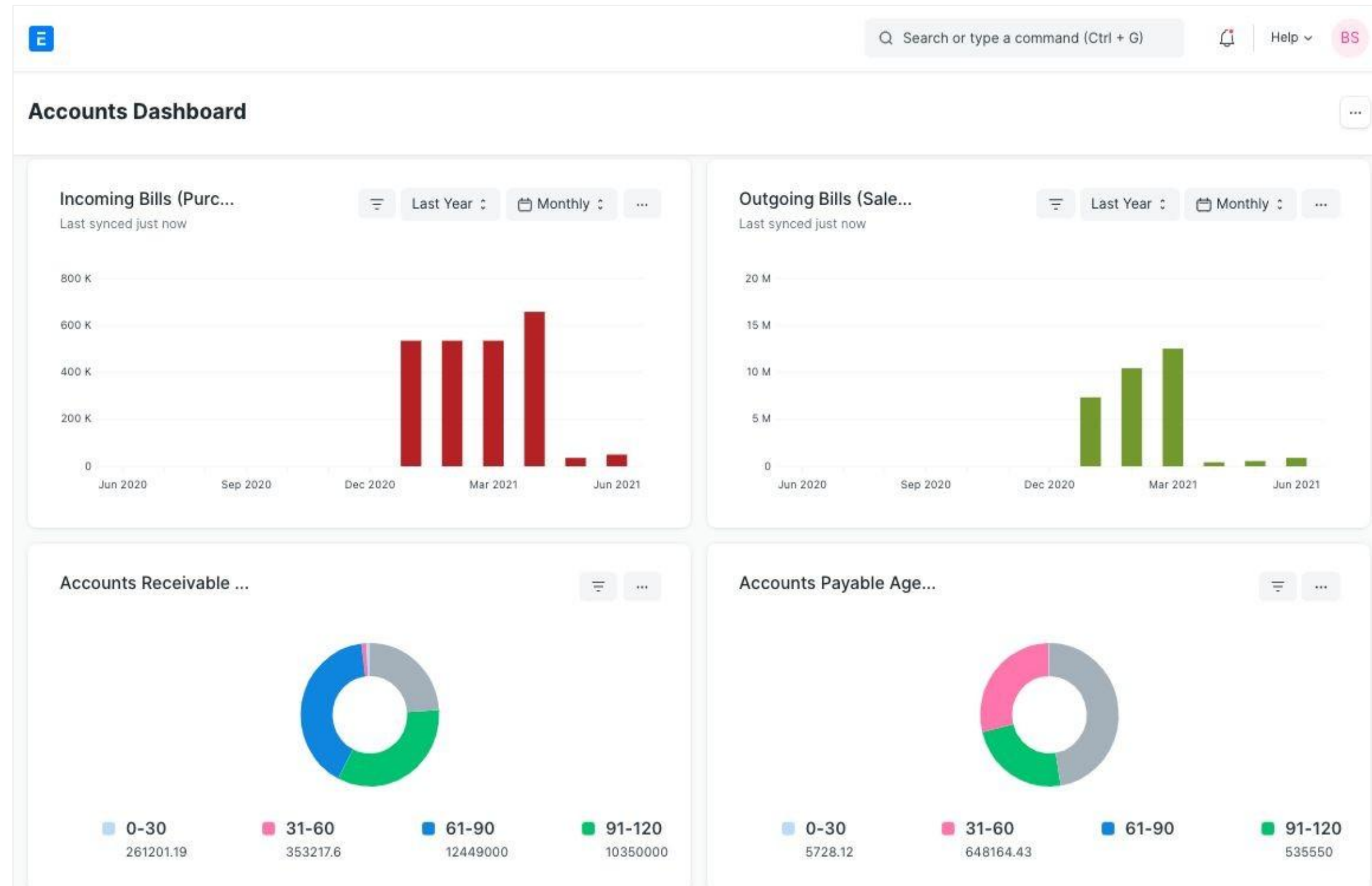


ERPNext Standards here in the Competition

### Source

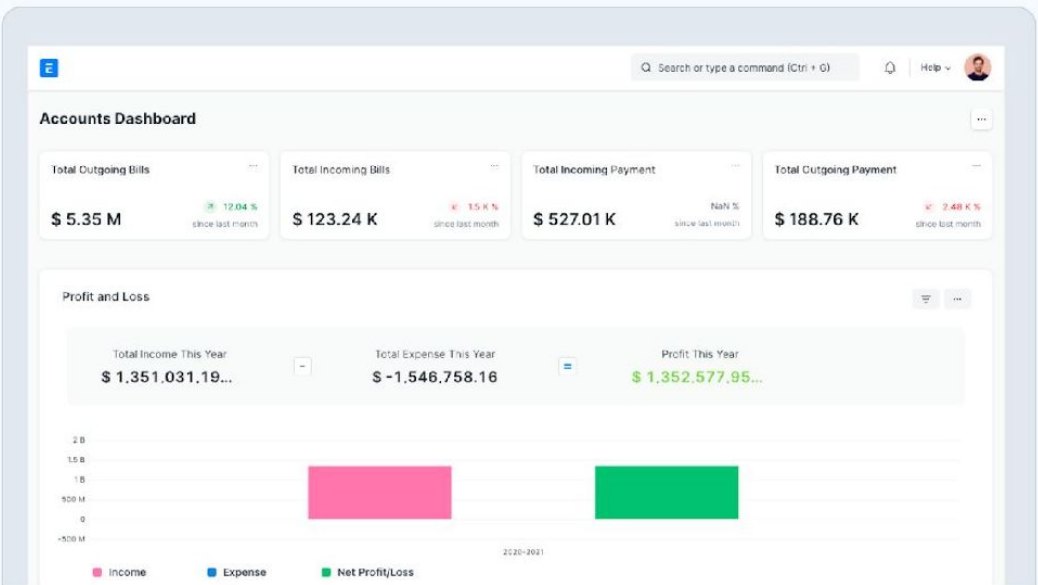
<https://erpnext.com/enterprise>

# Dashboards

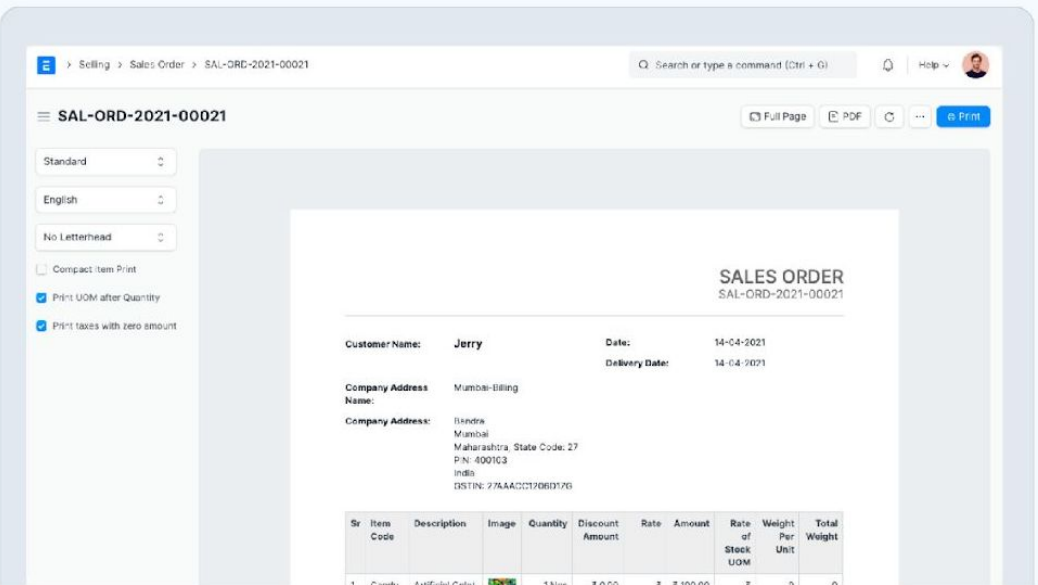


# Modules Chart

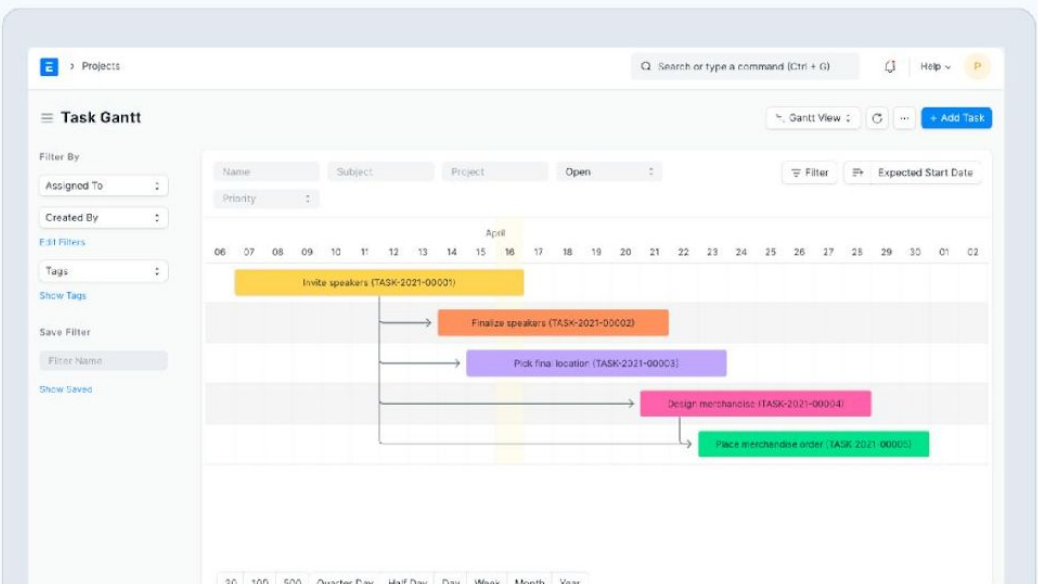
## Accounting



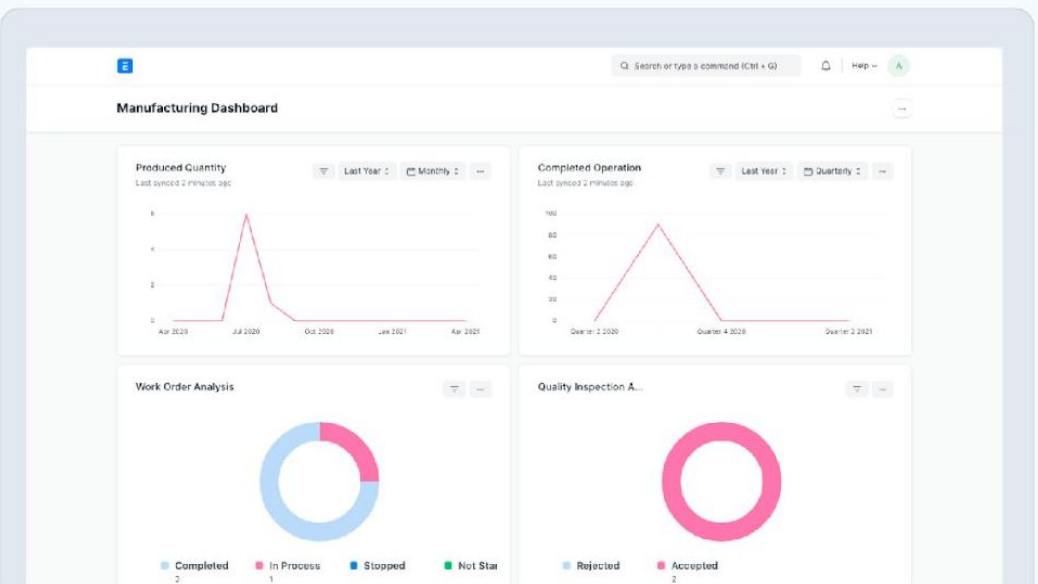
## Sales Order



## Projects



## Manufacturing



Website: [www.fileian.com](http://www.fileian.com)  
Email: [team@fileian.com](mailto:team@fileian.com)  
Call: 9175 975 009 / 909 630 22 11

# Print Format

E

> Selling > Sales Order > SAL-ORD-2021-00024

Q Search or type a command (Ctrl + G)

Help BS

SAL-ORD-2021-00024

Full PagePDFPrint

Select Print Format

✓ Standard

English

Unico Letter Head

☐ Compact Item Print

☐ Print UOM after Quantity

☐ Print taxes with zero amount

Unico

SALES ORDER

SAL-ORD-2021-00024

Customer Name: Innovative Chemicals Inc.

Date: 05-31-2021

Delivery Date: 05-31-2021

Address: 2946 Southern Street  
Hicksville,

Contact: Amber Jonas

Sr	Item Code	Description	Quantity	Discount Amount	Rate	Amount	Rate of Stock UOM	Weight Per Unit	Total Weight
1	Premium Plastic Chair	Premium Plastic Chair Set	Nos 1	\$ 0.00	\$ 1,000.00	\$ 1,000.00	\$ 1,000.00	0	0



CERTIFIED  
Partner

Website: [www.fileian.com](http://www.fileian.com)  
Email: [team@fileian.com](mailto:team@fileian.com)  
Call: 9175 975 009 / 909 630 22 11



# Module Support



# Modules

## Accounting Modules

- Chart of Accounts
- General ledger
- Journal Entries
- Bank and cash management
- Accounts Receivable and payables
- Financial Statements
- Budgeting and forecasting
- Multi -Currency and Multi- Company support
- Financial Analytics
- Integration With other module

## Sales & Purchase Order Module

- Quotation and sale order management
- Delivery note
- Sales Invoice and return
- Sales analytics
- POS
- Purchase order management
- Purchase Receipt
- Purchase Invoice and Returns
- Purchase Analytics





# Modules

## Manufacturing Modules

- BOM Management
- Production Planning & Control
- Work Order Management
- Integration with Other Modules
- Job Card Management

## CRM Modules

- Lead and Opportunity Management
- Contact and Account Management
- Quotation and Sales Order Management
- Customer Support and Ticket Management
- Email Marketing Integration
- Reporting and Analytics
- Integration with other module

## Inventory Management Module

- Item Management
- Stock Management
- Warehouse Management
- Inventory Valuation
- Order management
- Inventory Analytics
- Integration with other module

## Asset Management Module

- Asset Master
- Asset Depreciation
- Asset Maintenance
- Asset Tracking
- Asset Disposal
- Asset Analytics
- Integration with other module



Website: [www.fileian.com](http://www.fileian.com)  
Email: [team@fileian.com](mailto:team@fileian.com)  
Call: 9175 975 009 / 909 630 22 11

# Modules

## Project Management Module

- Project Creation and Setup
- Task Management
- Resource Management
- Cost Management
- Document Management
- Project Analytics and Reporting
- Integration with other module

## Website Management Module

- Website Creation and Designing
- Content Management
- SEO and Metadata
- E-commerce Functionality
- Integration with other module

## User Management Modules

- User Roles and Permission
- User Account Management
- User Activity Monitoring
- User Interface Customisation
- Integration with other module

## Integration Module

- API Integration
- Web Hooks
- Data Import and Export
- Data Synchronization
- E-Commerce Integration
- Third Party Integration
- Custom Integration



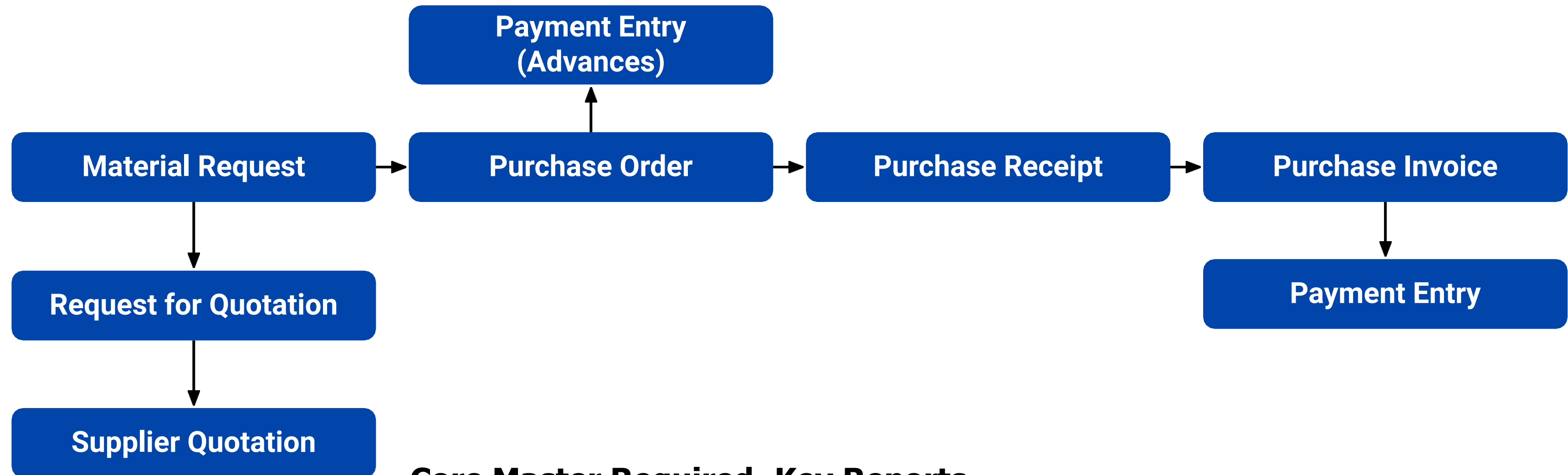
# Addon Modules

## Human Resource Modules

- Employee Management
- Attendance and Leave Management
- Payroll Processing
- Performance Management
- Expense Claims and Reimbursements
- Reports and Analytics
- Integration with other module
- Employee Life cycle Tracking

HR module does not come by default into ERPNext.  
HR module can be integrated into ERPNext Additionally

# Purchase Cycle



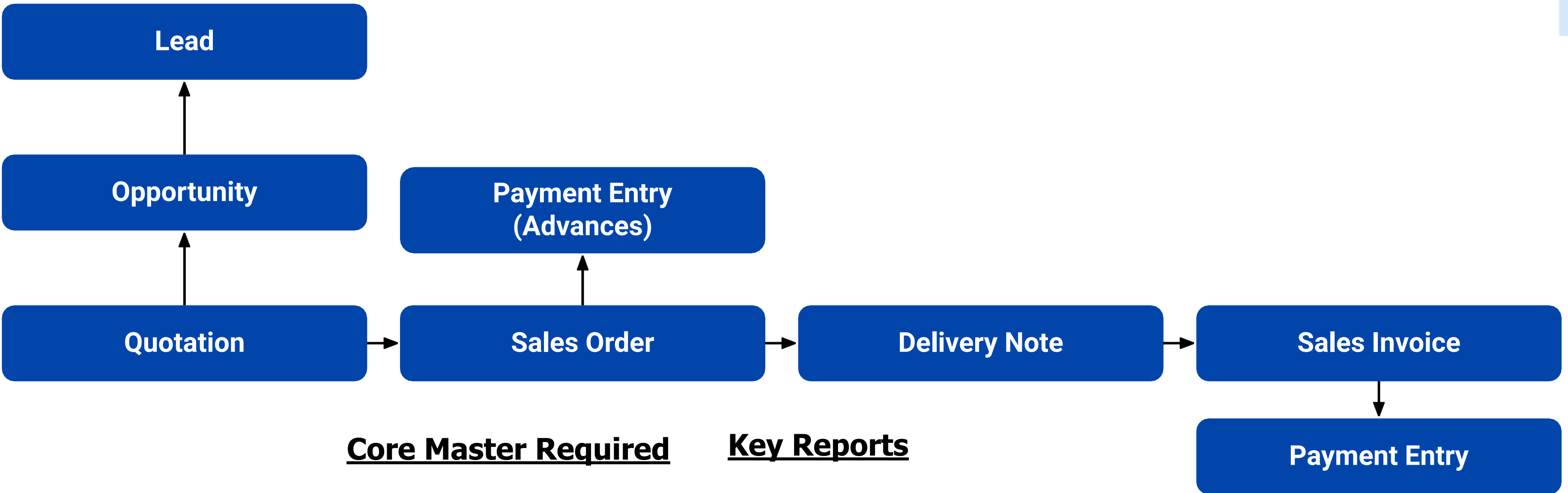
## Core Master Required

- Item Master
- Supplier Master
- Address Master

## Key Reports

- Purchase Order Analysis
- Items to Order and Receive
- Purchase Order Trend
- Procurement Tracker

# Sales Cycle



## Core Master Required

- Item Master
- Customer Master
- Address Master

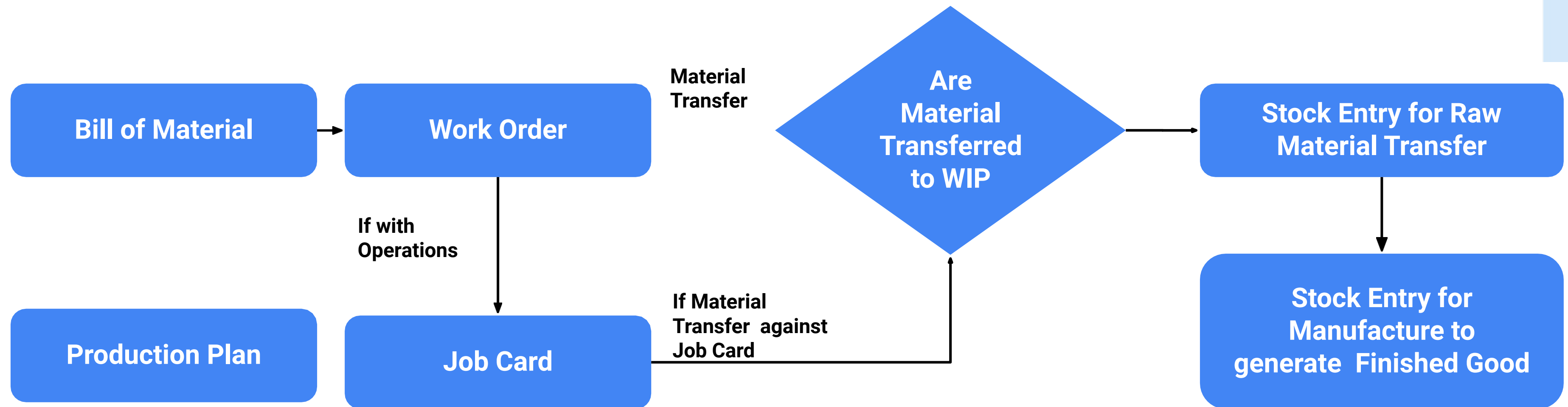
## Key Reports

- Sales Analytics Report
- Sales Order Analysis Report
- Sales Funnel Report



Website: [www.fileian.com](http://www.fileian.com)  
Email: [team@fileian.com](mailto:team@fileian.com)  
Call: 9175 975 009 / 909 630 22 11

# Manufacturing Module



## Core Master Required

- BOM (Bill of Material)
- Item Master
- Workstations
- Operations
- Routing

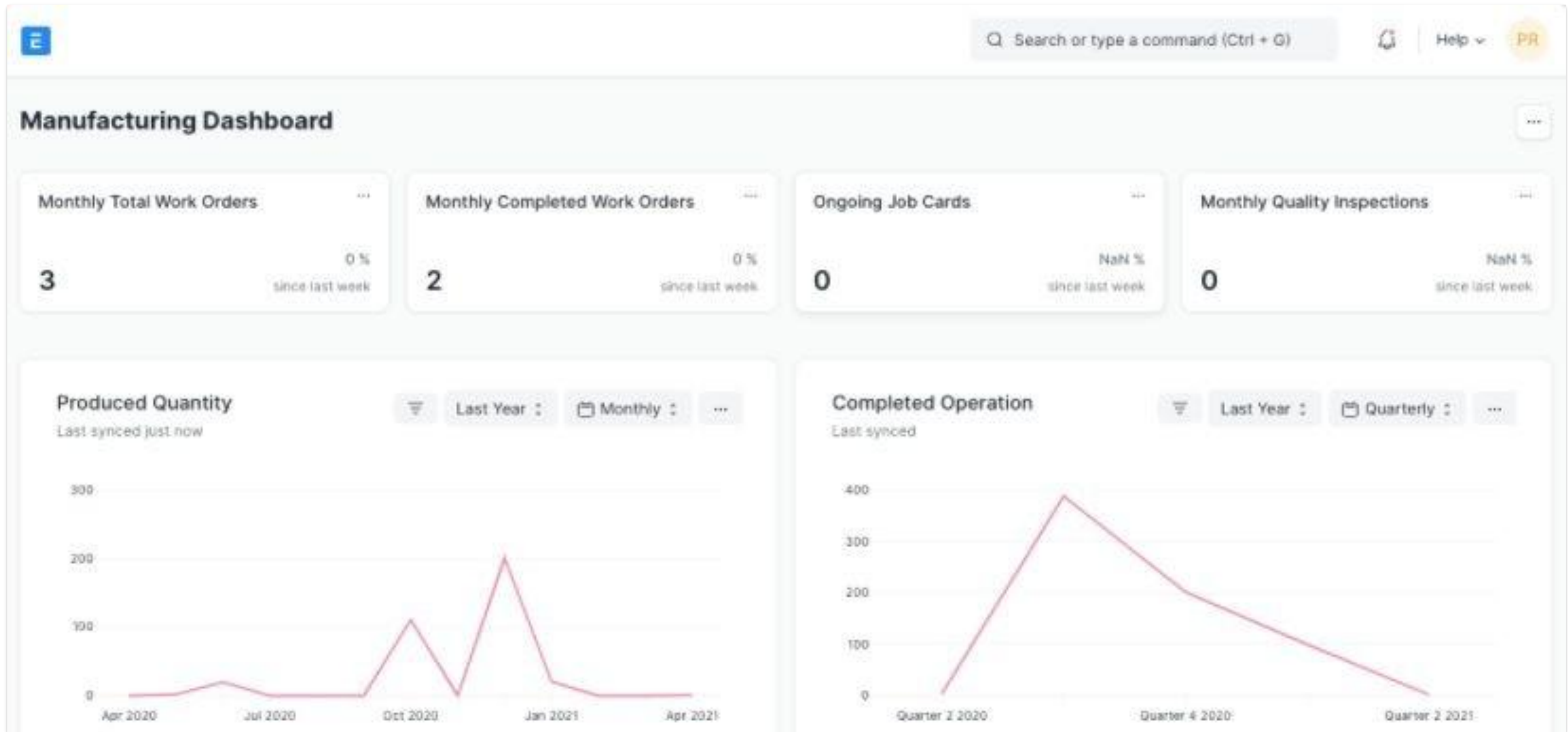
## Key Reports

- Production Analytics
- BOM Stock Report
- Work Order Summary
- Job Card Summary
- Quality Inspection Report



Website: [www.fileian.com](http://www.fileian.com)  
Email: [team@fileian.com](mailto:team@fileian.com)  
Call: 9175 975 009 / 909 630 22 11

# Manufacturing Dashboard





# Production Dashboard

Work Order Analysis



Completed 14 In Process 1 Stopped 3 Not Star 7

Pending Work Order



0-30 Days 1 30-60 Days 3 60-90 Days 3 90+ Days 21

Quality Inspection A...

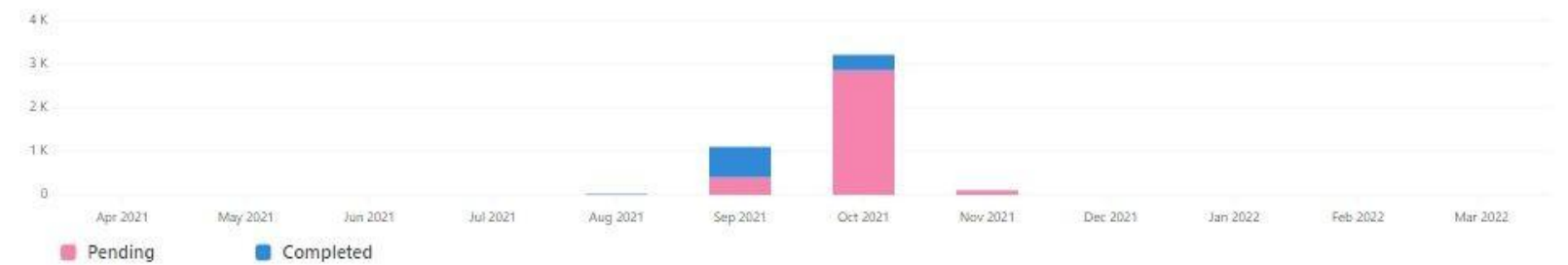


Rejected 2 Accepted 2

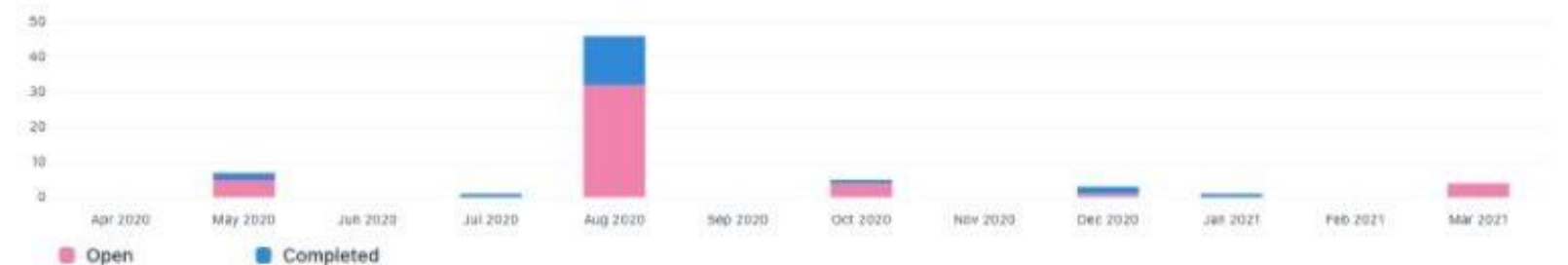
Last Month Downtime ...



Work Order Qty Analysis



Job Card Analysis



# Manufacturing Interface

Manufacturing

Selling

Stock

Support

Website

Settings

Utilities

DOMAINS

Agriculture

Education

Healthcare

Manufacturing

Non Profit

Retail

ADMINISTRATION

Customization

Integrations

Item144 Active

BOM10 Active

Work Order16 Open

Production Plan8 Open

Forecasting

Work Order Summary

BOM Stock Report

Production Planning Report

Dashboard

Reports & Masters

Production

Work Order

Production Plan

Stock Entry

Job Card

Downtime Entry

Bill of Materials

Item

Bill of Materials

Workstation

Operation

Routing

Reports

Production Planning Report

Work Order Summary

Quality Inspection Summary

Downtime Analysis

Job Card Summary

BOM Search

BOM Stock Report

Production Analytics

BOM Operations Time

Raw Materials Consumption

☐ Allow Continuous Material Consumption

Allow material consumptions without immediately manufacturing finished goods against a Work Order

Backflush Raw Materials Based On

BOM

Capacity Planning

☐ Disable Capacity Planning

Capacity Planning For (Days)

30

☐ Allow Overtime

Plan time logs outside Workstation working hours

☐ Allow Production on Holidays

Time Between Operations (Mins)

0

Default: 10 mins

Default Warehouses for Production

Default Work In Progress Warehouse

Default Scrap Warehouse

Default Finished Goods Warehouse

Overproduction for Sales and Work Order

Overproduction Percentage For Sales Order

0.000

Overproduction Percentage For Work Order

0.000

# Bill of Material Interface

Item \*

Concrete Mix

Item to be manufactured or repacked

Company \*

Demo

Item Name

Concrete Mix

Item UOM

Cubic Meter

☒ Is Active

☒ Is Default

☐ Allow Alternative Item

☒ Set rate of sub-assembly item based on BOM

Quantity \*

100

Quantity of item obtained after manufacturing / repacking from given quantities of raw materials

Currency and Price List

Currency \*

SAR

Conversion Rate \*

19.500000000

1 SAR = [?] INR

Rate Of Materials Based On

Valuation Rate

Operations

☒ With Operations

Manage cost of operations

Transfer Material Against

Work Order

Operations

No.	Operation	Workstation	Operation Time	Operating Cost (SAR)	Description	
1	Concrete Mixing	Concrete Mixer	60	66.67 ر.س	Concrete Mixing	Edit

Items

No.	Item Code	Qty	UOM	Rate (SAR)	Amount (SAR)	
1	Portland Cement	50	Bag	20.00 ر.س	1,000.00 ر.س	Edit
2	Fine Sand	600	Kg	1.00 ر.س	600.00 ر.س	Edit
3	Aggregate 10MM	400	Kg	2.00 ر.س	800.00 ر.س	Edit
4	Milled Gypsum	100	Kg	5.00 ر.س	500.00 ر.س	Edit
5	Water	3,000	Litre	0.30 ر.س	900.00 ر.س	Edit
6	Plastisizer	10	Kg	20.00 ر.س	200.00 ر.س	Edit

Costing

Operating Cost (SAR)

66.67 ر.س

Raw Material Cost (SAR)

4,000.00 ر.س

Scrap Material Cost (SAR)

0.00 ر.س

Operating Cost (INR)

₹ 1,300.00

Raw Material Cost (INR)

₹ 78,000.00

Scrap Material Cost (INR)

₹ 0.00

Total Cost (SAR)

4,066.67 ر.س

Total Cost (INR)

₹ 79,300.00

Materials Required (Exploded)

Exploded Items

No.	Item Code	Item Name	Description	Stock Qty	Rate	
1	Aggregate 10MM	Aggregate 10MM	Aggregate 10MM	400	₹ 39.00	Edit
2	Fine Sand	Fine Sand	Fine Sand	600	₹ 19.50	Edit
3	Milled Gypsum	Milled Gypsum	Milled Gypsum	100	₹ 97.50	Edit
4	Portland Cement	Portland Cement	Portland Cement	50	₹ 390.00	Edit
5	Plastisizer	Plastisizer	Plastisizer	10	₹ 390.00	Edit
6	Water	Water	Water	3,000	₹ 5.85	Edit

# Work Order Interface

Manufacturing > Work Order > MFG-WO-2021-00030

Search or type a command (Ctrl + G)

Help

S

DFRP220×90

Completed

< > ⌂ ⋮ Cancel

Shared With

+

Tags

Add a tag ...

0

0

FOLLOW

Rakin edited this 1 week ago

Rakin created this 1 week ago

Status \*

Completed

Company \*

Demo

Item To Manufacture \*

DFRP220×90

Qty To Manufacture \*

2

Item Name

DFRP220×90

Material Transferred for Manufacturing

2

BOM No \*

BOM-DFRP220×90-001

Manufactured Qty

2

Sales Order

Serial No and Batch for Finished Good

▼

Settings

Manufacturing > Work Order > MFG-WO-2021-00030

Search or type a command (Ctrl + G)

Help

S

DFRP220×90

Completed

< > ⌂ ⋮ Cancel

Settings

☐ Allow Alternative Item

☐ Skip Material Transfer to WIP Warehouse

☒ Use Multi-Level BOM

Check if material transfer entry is not required

Plan material for sub-assemblies

☒ Update Consumed Material Cost In Project

Warehouses

Work-In-Progress Warehouse \*

Work In Progress - DC

Target Warehouse \*

Finished Goods - DC

This is a location where operations are executed.

This is a location where final product stored.

Required Items

Required Items

No.	Item Code	Source Warehouse	Required Qty	Transferred Qty	Consumed Qty	
1	THINNER01: thinner	Stores - DC	10	10	10	Edit
2	RESIN001: pyster resin	Stores - DC	56	56	56	Edit
3	DAXPRO: Dax pro	Stores - DC	16	16	16	Edit
4	PAINT TEAK: paint - te...	Stores - DC	3	3	3	Edit

Manufacturing > Work Order > MFG-WO-2021-00030

Search or type a command (Ctrl + G)

Help

S

DFRP220×90

Completed

< > ⌂ ⋮ Cancel

Time

Planned Start Date \*

16-11-2021 09:17:14

Actual Start Date

16-11-2021 10:18:20

Planned End Date

17-11-2021 13:35:13

Actual End Date

16-11-2021 11:16:38

Expected Delivery Date

Lead Time

58.300

In Mins

Operations

Transfer Material Against

Work Order

Operations

No.	Operation	BOM	Comple...	Status	Workstation	Operati...	
1	Moulding	BOM-DFRP220×90-001	2	Comple...	Moulding table	40	Edit
2	Fibrelying	BOM-DFRP220×90-001	2	Comple...	fibreTable	480	Edit
3	Polishing	BOM-DFRP220×90-001	2	Comple...	Polishing table	160	Edit
4	cutting & edging	BOM-DFRP220×90-001	2	Comple...	Cutting Tabe	80	Edit
5	Lamination	BOM-DFRP220×90-001	2	Comple...	Laminating Table	120	Edit
6	Packing	BOM-DFRP220×90-001	2	Comple...	Packing table	50	Edit

Operation Cost

Planned Operating Cost

₹ 8,080.00

Actual Operating Cost

₹ 2.92

Additional Operating Cost

₹ 0.00

Corrective Operation Cost

₹ 0.00

From Corrective Job Card

Total Operating Cost

₹ 2.92

More Information

Item Description

DFRP220×90

Stock UOM

Nos



# Job Card Interface

E

> Manufacturing > Job Card > PO-JOB00073

Q Search or type a command (Ctrl + G)

Help

S

≡ Packing

Completed

Make : < > ⌂ ⋮ Cancel

Shared With

+

Tags

Add a tag ...

0 · 0

FOLLOW

Saumyaseelan edited this 1 week ago

Saumyaseelan created this 1 week ago

Work Order \*

MFG-WO-2021-00033

Posting Date

16-11-2021

BOM No

BOM-DFRP200×80-001

Company \*

Demo

Production

▼

Operation Section

Operation \*

Packing

Workstation \*

Packing table

Timing Detail

Time Logs

No.	Employee	From Time	To Time	Time In Mins	Completed Qty	
1		17-11-2021 22:15:13	17-11-2021 22:40:13	25.000	1	Edit

Download Upload

Total Completed Qty

1

Total Time in Mins

25.000

E

> Manufacturing > Job Card > PO-JOB00073

Q Search or type a command (Ctrl + G)

Help

S

≡ Packing

Completed

Make : < > ⌂ ⋮ Cancel

More Information

Sequence Id

0

FG Qty from Transferred Raw Materials

0

Requested Qty

0

Status

Completed

# Work Station & Operations

Manufacturing > Workstation > Concrete Mixer

Search or type a command (Ctrl + G)

Help

S

Concrete Mixer

Save

+

Tags

Add a tag ...

0 · 0

FOLLOW

Saumyaseelan edited this 2 months ago

Saumyaseelan created this 2 months ago

Production Capacity \*

2000

Operating Costs

Electricity Cost

300.00

per hour

Rent Cost

0.00

per hour

Consumable Cost

1,000.00

per hour

Wages

0.00

Wages per hour

Net Hour Rate

₹ 1,300.00

per hour

Working Hours

Holiday List

Working Hours

No.	Start Time	End Time	Enabled	
				No Data

Add Row

Description

Description

Manufacturing > Operation > Concrete Mlxing

Search or type a command (Ctrl + G)

Help

S

Concrete Mlxing

Not Saved

Save

Tags

Add a tag ...

0 · 0

FOLLOW

Saumyaseelan edited this 2 months ago

Saumyaseelan created this 2 months ago

Default Workstation

Concrete Mixer

Is Corrective Operation

Job Card

Create Job Card based on Batch Size

Sub Operations

No.	Operation	Operation Time	
			No Data

Add Row

Total Operation Time

0

Time in mins.

Operation Description

Description

Concrete Mlxing

# Production Planning, Analysis & BOM Operation Time Report

E > Manufacturing

Search or type a command (Ctrl + G)

Help

S

Production Planning Report

Create CardSet ChartRefreshMore

DemoSales OrderDocument NameRaw Material WarehouseDelivery DateInclude Sub-assembly Raw Materials

	ID	Item Code	Item Name	Warehouse	Order ...	Available	Delivery D...	Raw Material ...	Raw Material N...	Warehouse	Required ...	Ali...
1	SAL-ORD-2...	Concrete Mix	Concrete Mix	Stores - DC	200.000	200.000	10-10-2021	Portland Cement	Portland Cement	Stores - DC	100.000	
2								Plastisizer	Plastisizer	Stores - DC	20.000	
3								Milled Gypsum	Milled Gypsum	Stores - DC	200.000	
4								Water	Water	Stores - DC	6,000.000	
5								Aggregate 10...	Aggregate 10MM	Stores - DC	800.000	
6								Fine Sand	Fine Sand	Stores - DC	1,200.000	
7	SAL-ORD-2...	Concrete Mix	Concrete Mix	Stores - DC	300.000	300.000	12-10-2021	Portland Cement	Portland Cement	Stores - DC	150.000	
8								Plastisizer	Plastisizer	Stores - DC	30.000	
9								Milled Gypsum	Milled Gypsum	Stores - DC	300.000	
10								Water	Water	Stores - DC	9,000.000	
11								Aggregate 10...	Aggregate 10MM	Stores - DC	1,200.000	
12								Fine Sand	Fine Sand	Stores - DC	1,800.000	
13	SAL-ORD-2...	Tes -Prime	TES- prime Blue	Stores - DC	10.000	10.000	12-10-2021	Electric Scoote...	Electric Scooter - E	Stores - DC	10.000	
14								Electric Scoot...	Electric Scooter - f	Stores - DC	10.000	
15	SAL-ORD-2...	Concrete Mix	Concrete Mix	Stores - DC	300.000	200.000	12-10-2021	Portland Cement	Portland Cement	Stores - DC	150.000	

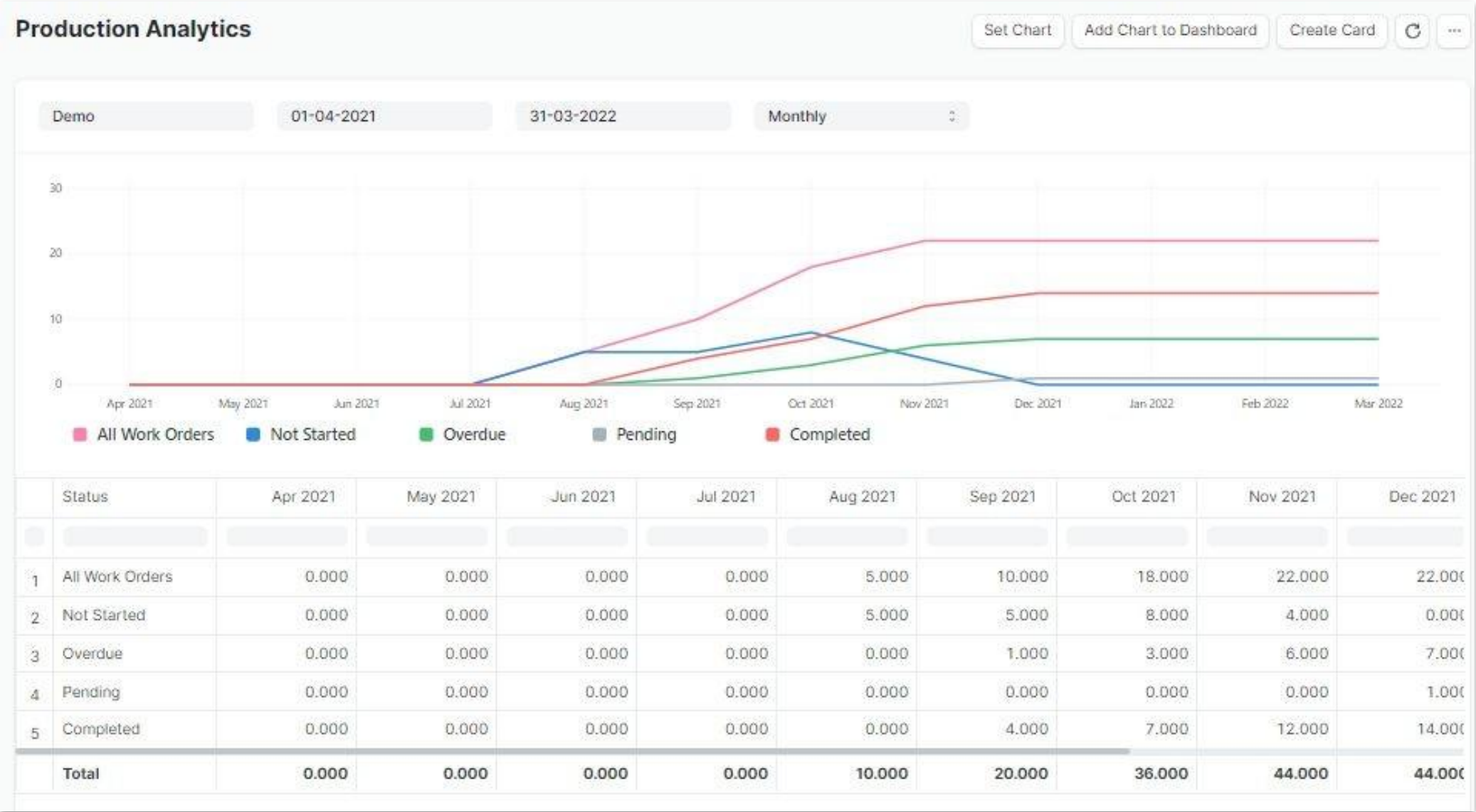
For comparison, use >5, <10 or =324. For ranges, use 5:10 (for values between 5 & 10).

Execution Time: 0.591228 sec

BOM Operations Time

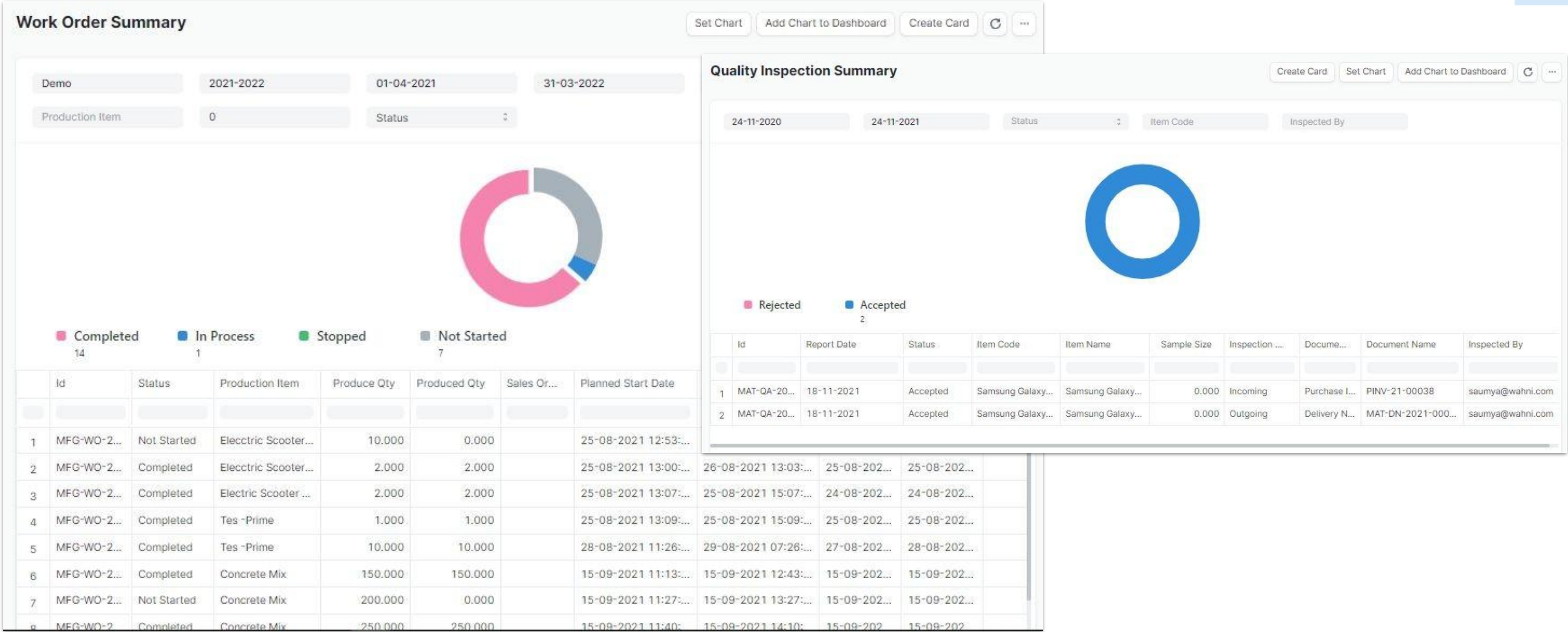
Create CardSet ChartRefreshMore

	BOM ID	BOM Item Code	Item Name	UOM	Operation	Workstation	Time (In Mins)	Sub-assembly BOM Co...
1	BOM-Burger Bun-...	Burger Bun	Burger Bun	Nos	Cooking	Oven	10	0
2	BOM-Concrete Mi...	Concrete Mix	Concrete Mix	Cubic Meter	Concrete Mixing	Concrete Mixer	60	0
3	BOM-Curcumin-001	Curcumin	Curcumin	Kg	Centrifuging	Centrifugal M...	120	0
4					Ageing	Ageing	240	0
5	BOM-DFRP180×8...	DFRP180×80	DOOR	Nos	Fibrelying	fibreTable	240	0
6					Moulding	Moulding table	20	0
7					Packing	Packing table	25	0
8					cutting & edging	Cutting Tabe	30	0
9					Polishing	Polishing table	80	0
10					Lamination	Laminating T...	60	0
11	BOM-DFRP200×8...	DFRP200×80	DOOR	Nos	Packing	Packing table	25	0
12					Lamination	Laminating T...	60	0
13					Fibrelying	fibreTable	240	0
14					Moulding	Moulding table	20	0
15					Polishing	Polishing table	80	0
16					cutting & edging	Cutting Tabe	30	0
17	BOM-DFRP220×9...	DFRP220×90	DFRP220×90	Nos	cutting & edging	Cutting Tabe	30	0

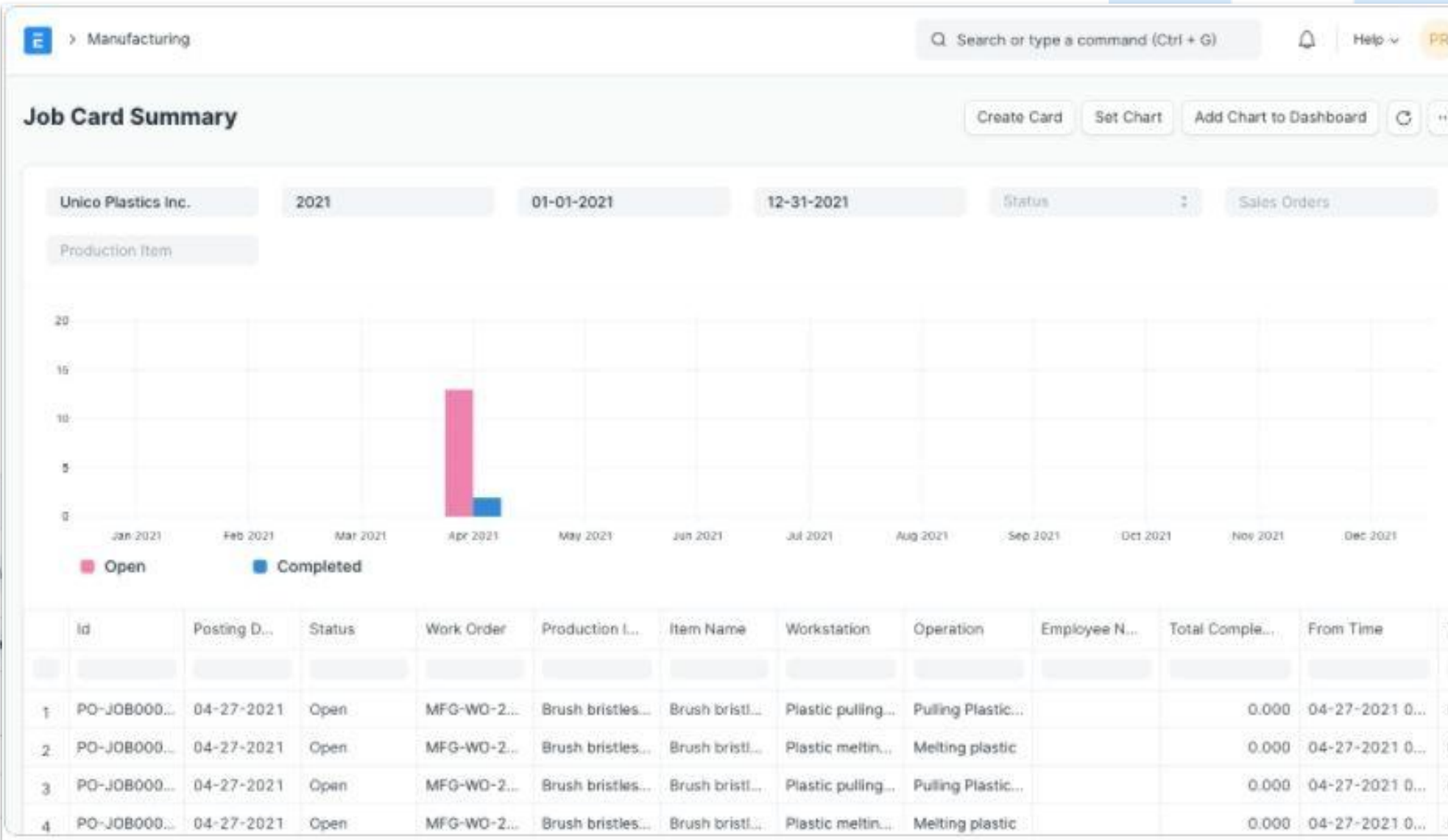
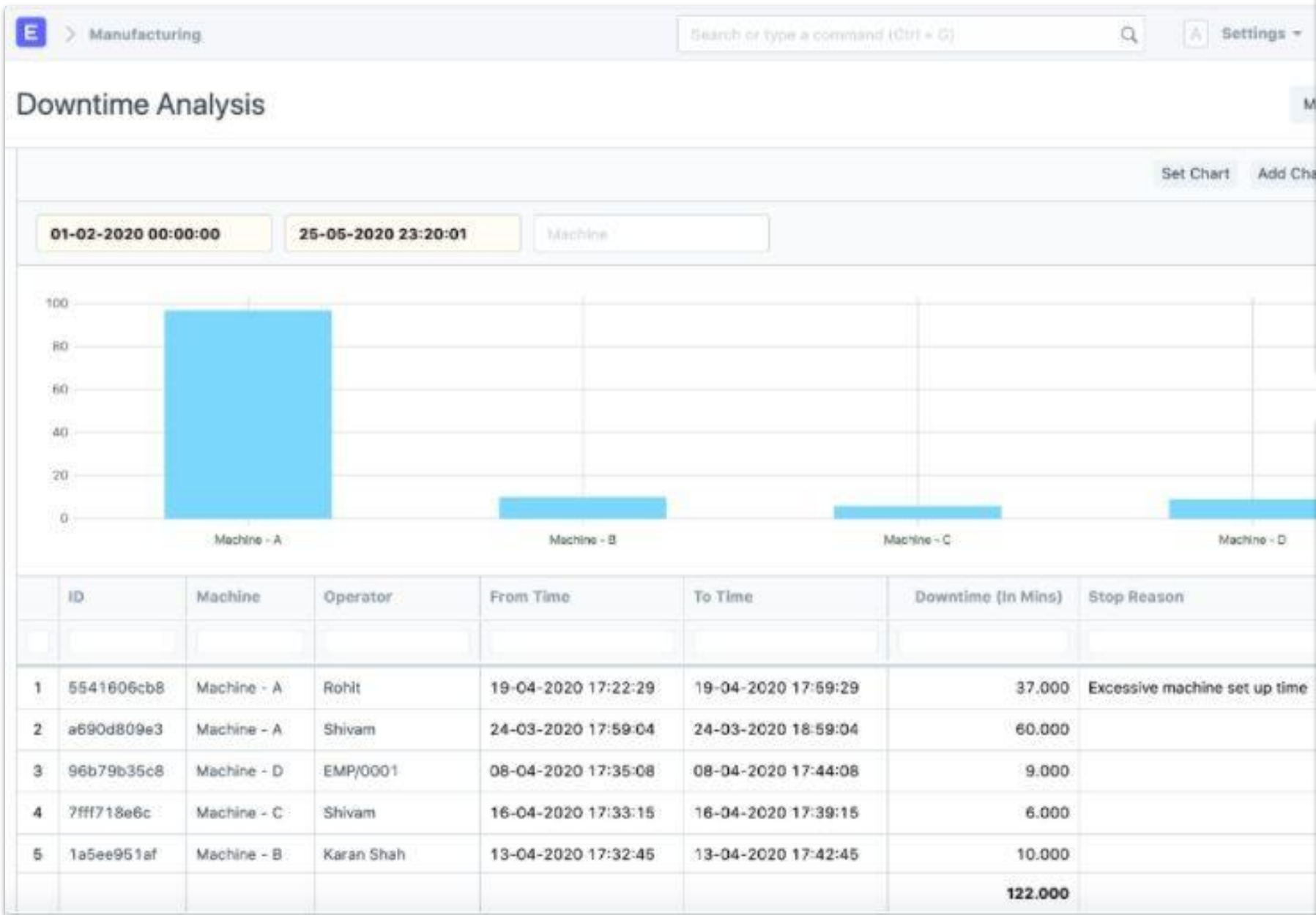




# Work Order Summary & Quality Inspection Summary



# Downtime Analysis, Job Card Summary & BOM Stock Report



Manufacturing

Search or type a command (Ctrl + G)

SettingsHelp99+

BOM Stock Report

MenuRefresh

BOM-Shaving Brush-007Stores - UPShow exploded view1

	Item	Description	Qty per BO...	Required Qty	In Stock Qty	Enough Parts to
1	Cellulose	Cellulose	1.000	1.000		
2	Coal	Coal	1.000	1.000	0.000	
3	Crude Oil	Crude Oil	1.000	1.000	0.000	
4	Natural Gas	Natural Gas	1.000	1.000		
5	Raw Plastic Crystals	Raw Plastic	1.000	1.000	200.000	2
6	Salt	Salt	1.000	1.000		

For comparison, use >5, <10 or >324. For ranges, use 5:10 (for values between 5 & 10).

Execution Time: 0.1 sec

# Benefits of ERPNext

## Cost Effective

- Unlimited User creation
- No in-house infrastructure required (Cloud based system)
- Low cost of acquisition, implementation and customer support

## Adaptability & Flexibility

- Integrations with attendance machines, Google services
- Allow remote access and offline capabilities
- Custom Workflows
- On-the-fly Customization

## Simplicity

- Web-based system
- Easy Customization and extension
- Mobile Access
- Extensive functionalities
- Integrated into a single platform

## Real-time Analytics

- Analytics, Reports and Dashboards are updated across department as soon as data updated
- Secure, Cloud based with offline capabilities





# Comparison with Competitors

Comparison	Frappe (Fileian)	SAP	Oracle	Microsoft	SaaS Software
Licensing Cost	Free	Paid	Paid	Paid	Paid
Users Limit	Unlimited	Limited	Limited	Limited	Limited
Cloud Hosting Type	Private / Public Cloud	Private / Public Cloud	Private / Public Cloud	Public Cloud	Public Cloud
Cloud Hosting Cost	Starting < 10K	Starting > 50K	Starting > 50K	Starting > 50K	Included
Implementation Time	6 to 12 Weeks	12 to 24 Weeks	12 to 24 Weeks	6 to 12 Weeks	No Applicable
Implementation Cost	Low	High	High	Medium	High
Customisation Type	Full (Low Code No Code)	Partial	Partial	Limited	Not Applicable
Customisation Time	Low	Very High	Very High	High	Not Applicable
Customisation Cost	Low	Very High	Very High	Medium	Not Applicable
Migration Cost	Low	Very High	High	Medium	High
Integrations Cost	Low	High	High	Medium	Very High
Security	Yes	Yes	Yes	Yes	No
Maintenance Cost	Low	Very High	Very High	High	High



Website: [www.fileian.com](http://www.fileian.com)  
Email: [team@fileian.com](mailto:team@fileian.com)  
Call: 9175 975 009 / 909 630 22 11

# Comparison with Freelancers & Inhouse Team

Parameter	Fileian	Freelance Developer	In-House Development
Time to get right developers	1 day - 2 weeks	4 - 12 weeks	1 - 12 weeks
Time to start a project	1 day - 2 weeks	1 - 12 weeks	2 - 10 weeks
Acquisition cost	0	0	\$9,000 - \$25,000
Recurring cost of training & benefits	0	0	\$5,000 - \$10,000
Pricing (weekly Average)	1.5x	1x	4x
Time to scale size of team	1 day - 2 weeks	1 - 12 weeks	4 - 16 weeks
Project failure risk	Extremely Low	Very High	Low
Termination costs	NONE	None	High
Developers backed by a delivery team	YES	No	Some
Agile Development methodology	YES	No	Some
Quality assurance	YES	Some	No
Impact due to turnover	NONE	High	High
Structured training programs	YES	No	Some
Communications	Seamless	Uncertain	Seamless
Tools and professional environment	Best-in-Class	No	Varies



Website: [www.fileian.com](http://www.fileian.com)  
Email: [team@fileian.com](mailto:team@fileian.com)  
Call: 9175 975 009 / 909 630 22 11

# Third Party Integrations



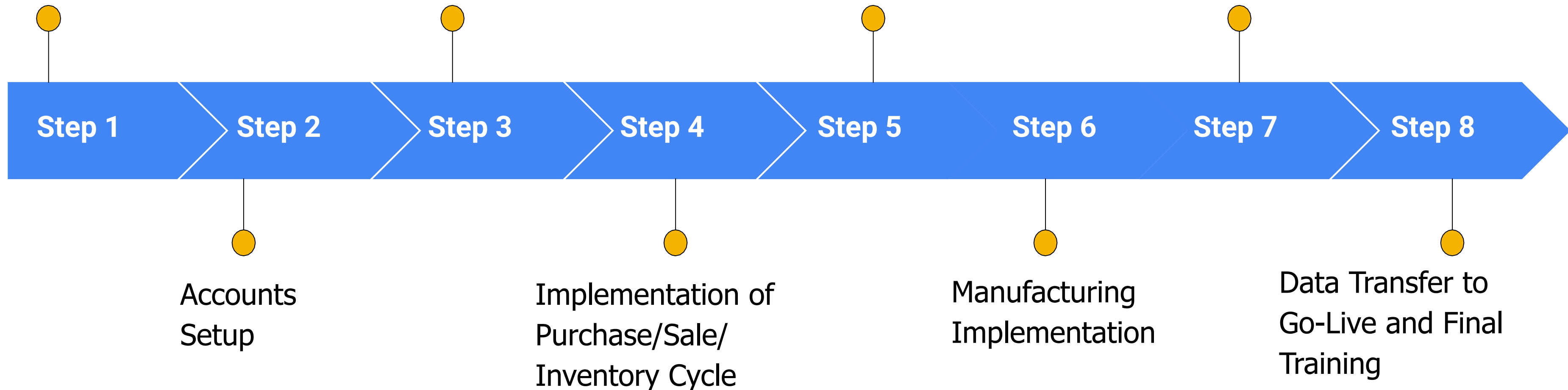
# Project Implementation (Standard Practice)

Understanding  
Customer Requirement

Master Data  
Creation

Print Format  
Customization

Integrations







Building awesome enterprise applications

# About Fileian

## **We Drive Your Data With Trust & Security !**

Fileian is CMMI Level 3, ISO & DIPP Certified Company trusted by Enterprises & Governments for hassle free Applications Consulting, Development & Maintenance Projects.



Website: [www.fileian.com](http://www.fileian.com)  
Email: [team@fileian.com](mailto:team@fileian.com)  
Call: 9175 975 009 / 909 630 22 11

# About Fileian

## Fileian Ventures Private Limited

**Our mission is to give Clarity, Capability & Courage to Clients to build business using technology efficiently.**

Established in 2016 to provide easy access to Enterprises with Affordable and Efficient Technology for Small, Mid & large size businesses. At Fileian, we have expert team to manage and maintaining ERP, CRM, HRM systems. We have successfully completed more than 100 Projects.

### Company Registrations:

CIN Number: U74999MH2016PTC280265  
GST Number: 27AAFCD6767M1ZZ

ISO 9001:2015 Number: IN13506A  
CMMI Level 3 Number: SPC19C3491



***# Recently Implemented  
Customised Enterprise Application  
at Heathrow Airport, London***



# Our Director's Message

## We drive your data!



**Niheel Sonar**  
Founder & MD

I hold experience of 14+ Years in IT Services Industry for Building Enterprise Applications & Government Projects. I have experience of working with Fintech, Lending, Manufacturing, Telecom, Services Industry Projects

The Open source softwares is growing tremendously faster and getting adopted by many fortune 500 companies too. The Small and Medium Scale Enterprises are in a strong position to get affordable and efficient technology solutions in comparison to another Licensed Applications.

If you don't trust me then visit the link below  
<https://erpnext.com/enterprise>

# Our Services

*On a Mission to help Enterprises get Efficient & Affordable Technology!*

Enterprise  
Applications  
Consulting

ERP, CRM, HRM  
Implementations  
& Maintenance

Custom Web &  
Mobile App  
Development

Enterprise  
Product  
Development

Web3  
Technologies

**ERPNext**

**FrappeCloud**

**F Framework**



CERTIFIED  
**Partner**

Website: [www.fileian.com](http://www.fileian.com)

Email: [team@fileian.com](mailto:team@fileian.com)

Call: 9175 975 009 / 909 630 22 11



# What are the recognitions?

Fileian is proud to showcase the recognitions for Quality Standard Certification displayed below



CERTIFIED  
Partner

Website: [www.fileian.com](http://www.fileian.com)

Email: [team@fileian.com](mailto:team@fileian.com)

Call: 9175 975 009 / 909 630 22 11

# How to engage?

Our experts will come up with all kinds of ideas and initiatives for delivering the best solutions of your expectations

## Connect

Connect & share your Requirement with Terms

- Discovery Call
- Requirement Generation
- Agreement & NDA

## Implement

Connect & share your Requirement with Terms

- Implement Modules
- Data Migration & Testing
- Client Training

## Customize

Connect & share your Requirement with Terms

- Requirement Generation
- Integrations, Migrations
- Testing, Training, Launch

## Maintain

Connect & share your Requirement with Terms

- Maintenance Contracting
- Bugs fixing
- Training & Support

*\* Terms & Conditions Applicable depending on Clients & Projects Requirements.*

*\* For more details - Engage with our team or visit us at [www.fileian.com](http://www.fileian.com)*



CERTIFIED  
**Partner**

Website: [www.fileian.com](http://www.fileian.com)

Email: [team@fileian.com](mailto:team@fileian.com)

Call: 9175 975 009 / 909 630 22 11



# Thank You !

For Pricing, Demo or any other information

Please email at [team@fileian.com](mailto:team@fileian.com) or call us at 9175 975 009 / 9096 302 211



---

## Company Registrations

CIN Number: U74999MH2016PTC280265

GST Number: 27AAFCD6767M1ZZ

ISO 9001:2015 Number: IN13506A

CMMI Level 3 Number: SPC19C3491



## Fileian Ventures Private Limited (Indian)

Registered Office: 302, ARTIS, Govind Nagar, RD Circle, Nashik - 422005

Call: 9175 975 009 / 909 630 22 11

Website [www.fileian.com](http://www.fileian.com) | Email: [email@fileian.com](mailto:email@fileian.com)